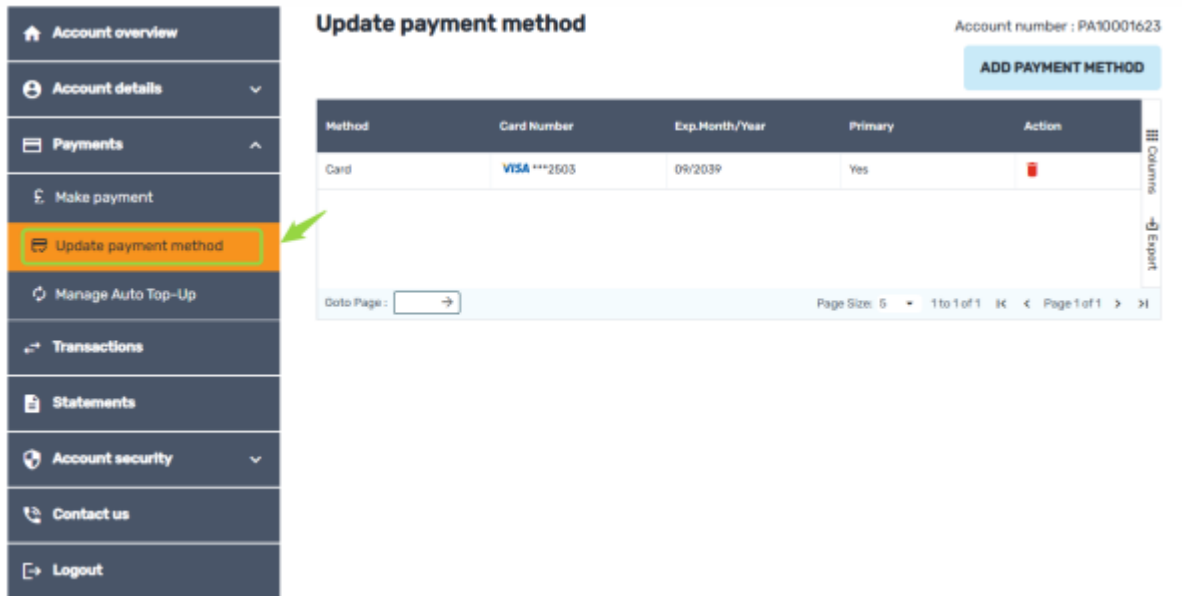


Step 1

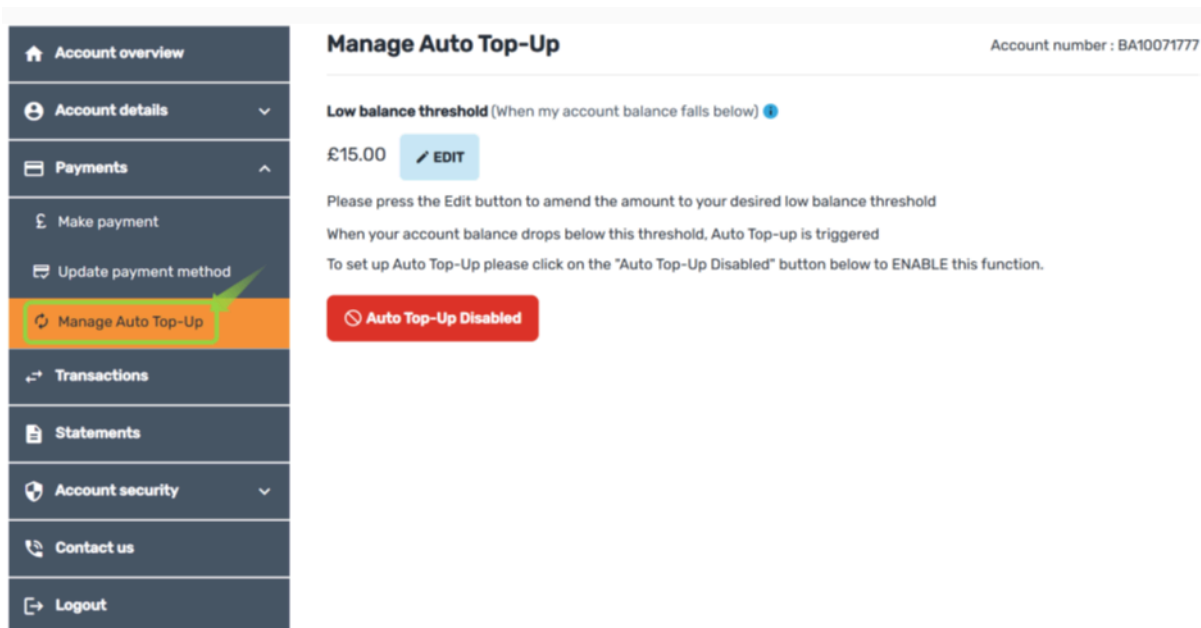
First you will need to save a payment card to your account



Step 2

Next you need to review your low balance threshold


Click on Manage Auto top-up menu option to enable the auto top-up feature and edit the low balance



Set your Low balance threshold amount by clicking on the Edit button, change the value, and then click the Update button to save the changes.

Manage Auto Top-Up Account number

Low balance threshold (When my account balance falls below) ⓘ

£ 10.00 ↻ UPDATE 

Please press the Edit button to amend the amount to your desired low balance threshold
When your account balance drops below this threshold, Auto Top-up is triggered
To set up Auto Top-Up please click on the "Auto Top-Up Disabled" button below to ENABLE this function.

⊘ Auto Top-Up Disabled

Step 4

Next click on the Auto Top-Up Disabled button to enable auto top-up

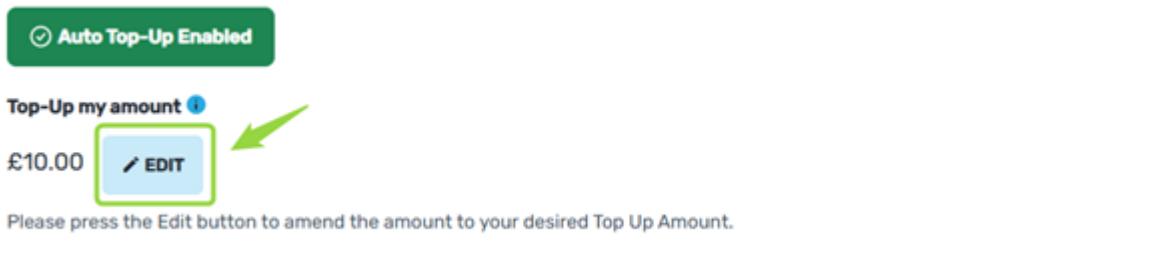
Please press the Edit button to amend the amount to your desired low balance threshold
When your account balance drops below this threshold, Auto Top-up is triggered
To set up Auto Top-Up please click on the "Auto Top-Up Disabled" button below to ENABLE this function.

⊘ Auto Top-Up Disabled

The button will switch to Auto Top-Up Enabled.

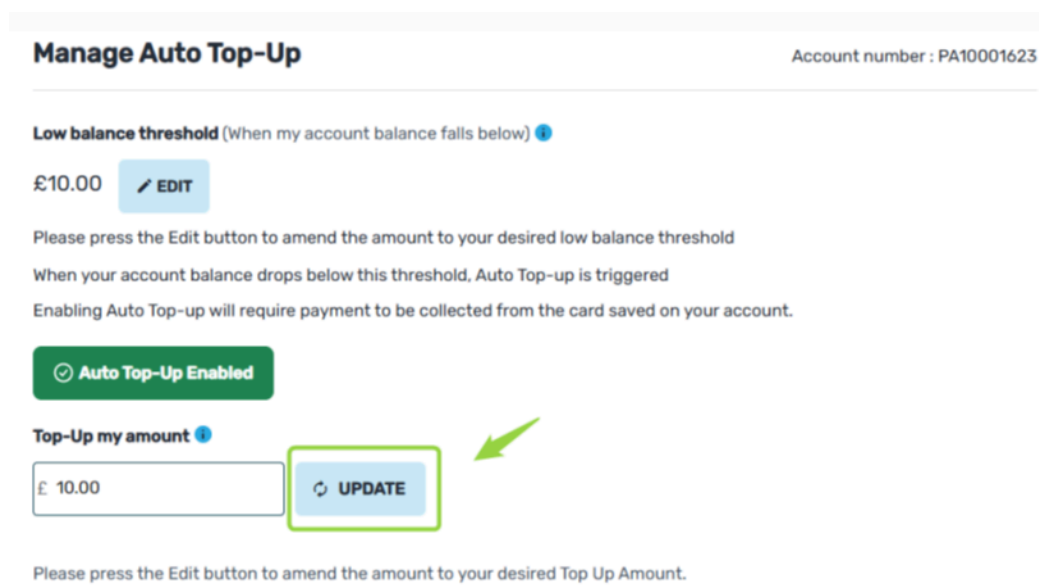
Step 5

Now Set your Top Up Amount by clicking on the Edit button



Step 6

Enter the Top Up Amount you want to pay to your account each time your low balance is reached and click UPDATE to save changes



You have now set up Auto Top Up